

LED PROFILE VARIO30-05 ACDE-9 1000 ANOD.



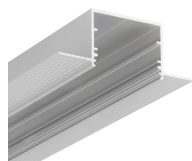
Spackle in



Architectural



Lighting



CE



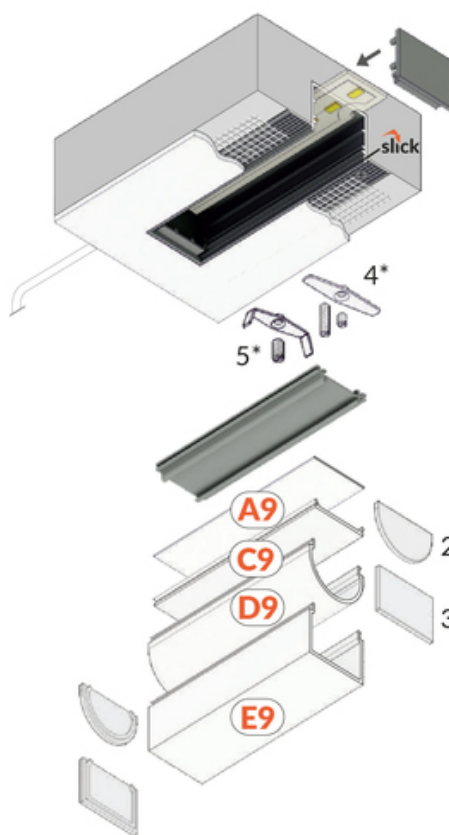
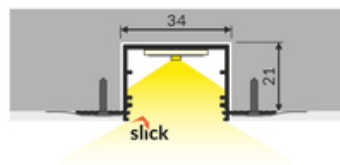
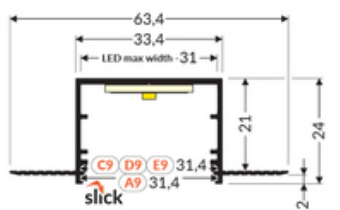
EU industrial designs



Made in Poland



Buy product

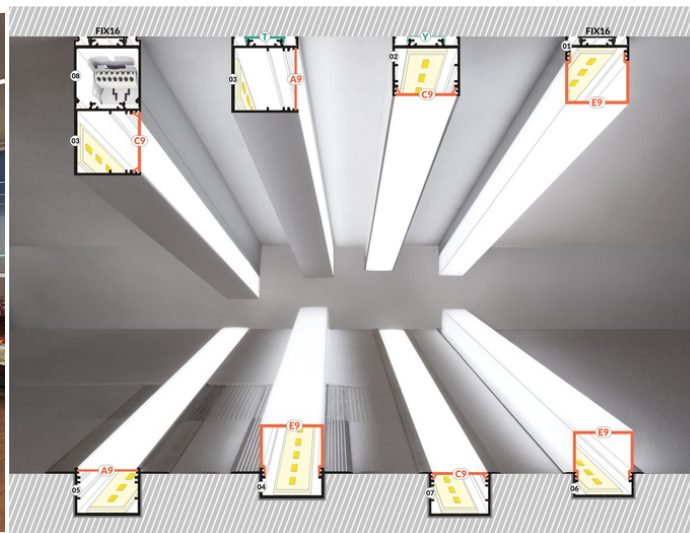


2*
end cap D9
zaslepka D9

3*
end cap E9
zaslepka E9

4*
LED clamp VARIO30
docisk LED VARIO30

5*
LED clamp VARIO30-1
docisk LED VARIO30-1

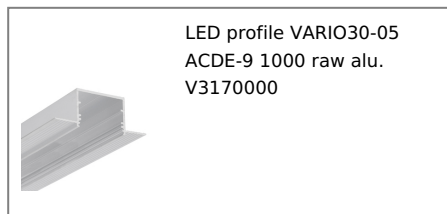


Basic Informations

EAN: 5901597241379
 Index: V3170020
 Material: aluminium
 Color: anodized
 Length [mm]: 1000
 Weight [kg]: 0.375
 Country of origin: PL

Measurement unit: qty
 Product packaging dimensions [mm]: 1000 x 63,4 x 24
 Bulk packing [qty]: 20
 Master packaging type: Bulk
 Product with gross packaging weight [kg]: 7.5

AVAILABLE COLORS



AVAILABLE VARIANTS

1000 mm, 2000 mm, 3000 mm, 4050 mm

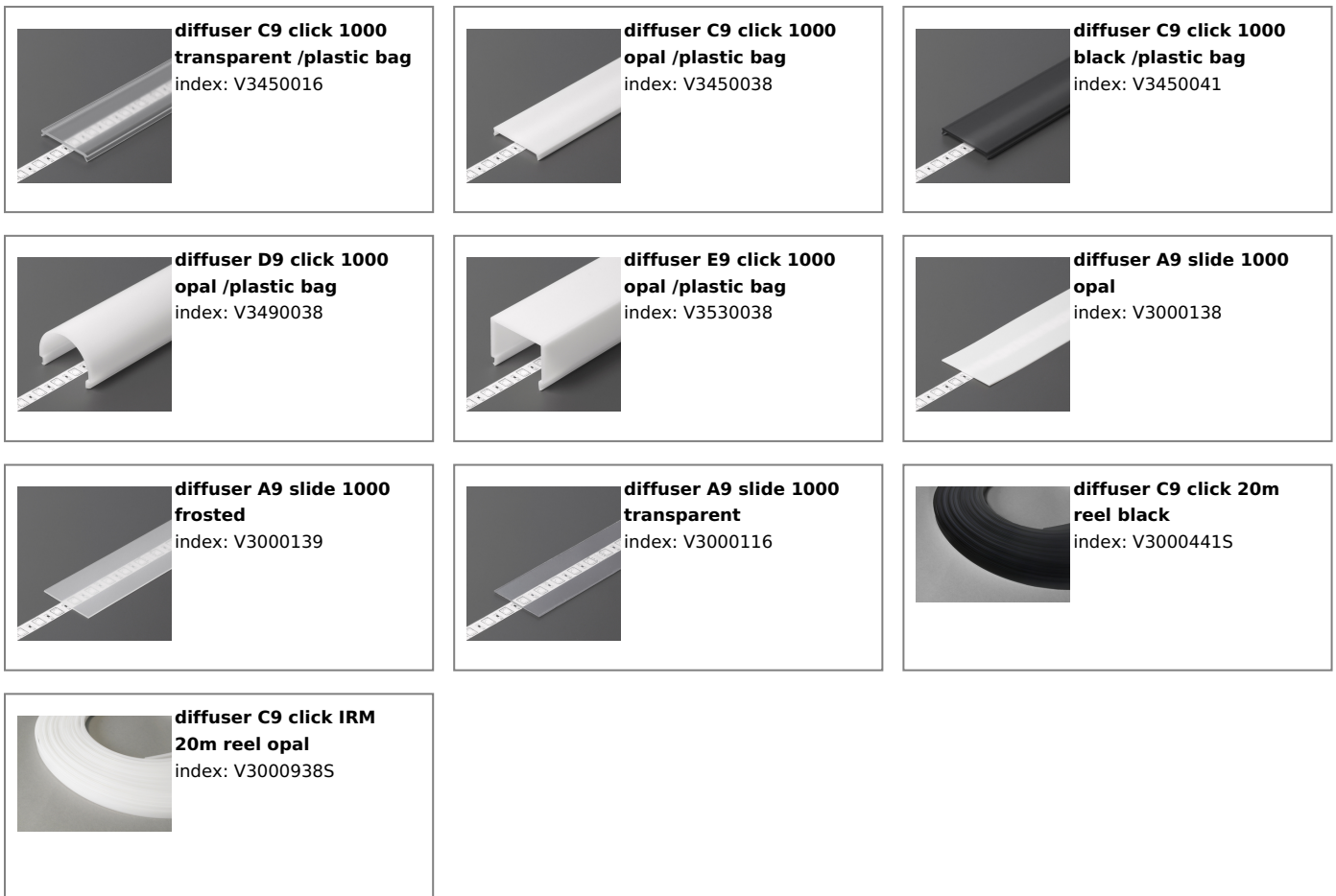
Matching elements

DIFFUSERS

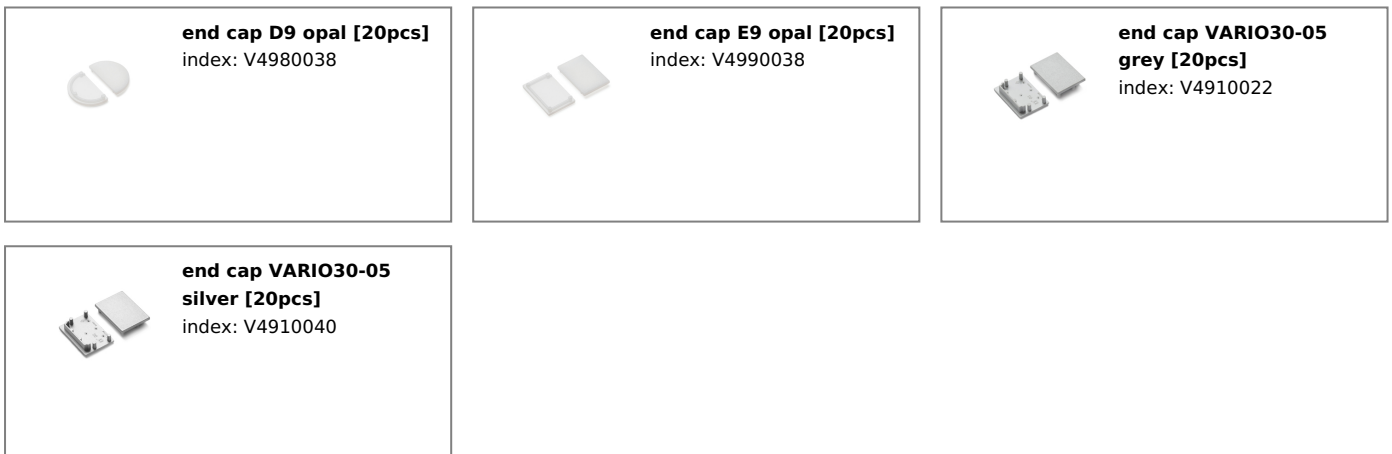
TOPMET LIGHT KŁOSOWICZ WIŚNIEWSKI sp. z o.o.
 Ostrowska 354 | 61-312 Poznań | POLAND
 tel.: +48 61 872 75 00
 info@topmet.pl

pdf card generation date: 10.03.2025





END CAPS



CONNECTORS



**connector VARIO30-05
60deg anod. /plastic bag**
index: V4720020S



**connector VARIO30-05
90deg anod. /plastic bag**
index: V4730020S



**connector VARIO30-05
90deg bent anod.
/plastic bag**
index: V4740020S



**connector VARIO30-05
120deg anod. /plastic
bag**
index: V4750020S



**connector VARIO30-05
135deg anod. /plastic
bag**
index: V4760020S



**connector VARIO30-05
180deg /plastic bag**
index: V4650000s



**connector VARIO30-05
270deg bent anod.
/plastic bag**
index: V4770020S